



## BRUSCH CLEAN

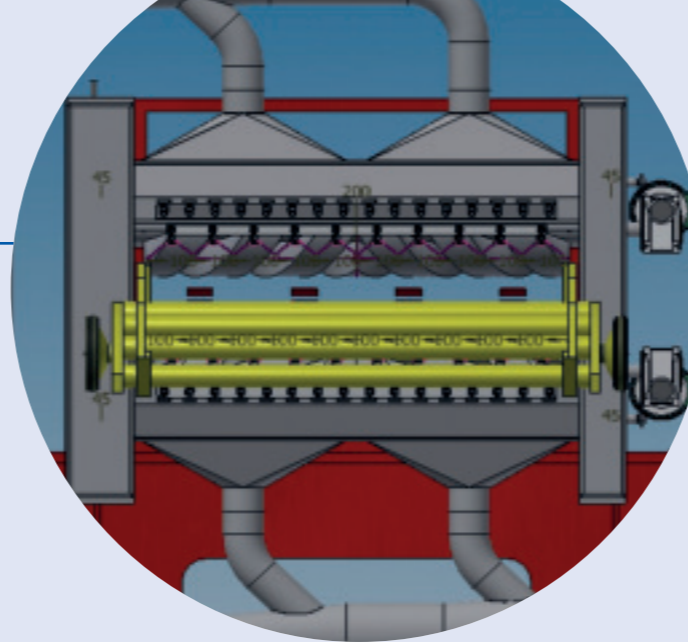
### PLC-controlled metal sheet cleaning system.

It consists of a number of nozzles for spraying the cleaning liquid and of two rotating (upper and lower) brushes adjustable in height.

Brushes with mouths for connection to the suction blower (cyclonic aspiration for separation of solids from liquids).

#### Applications:

Cleaning of blanks and coils with max. width of 800mm.



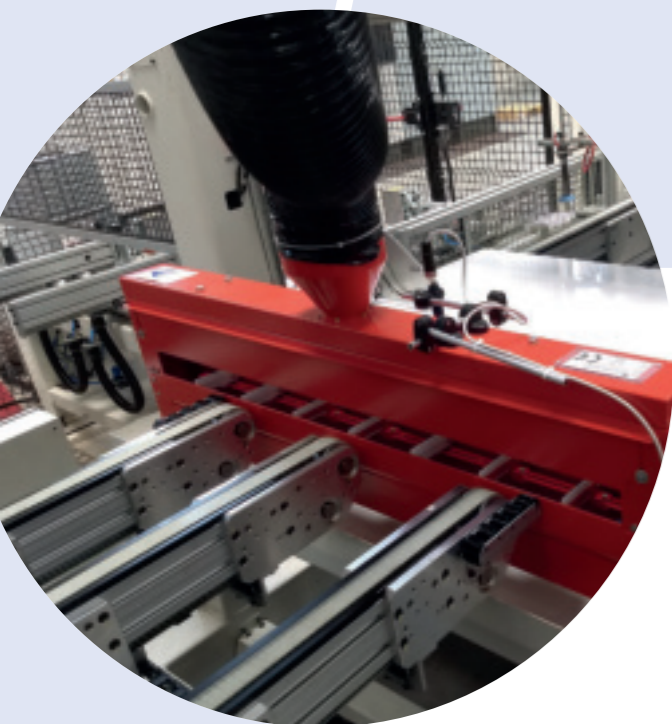
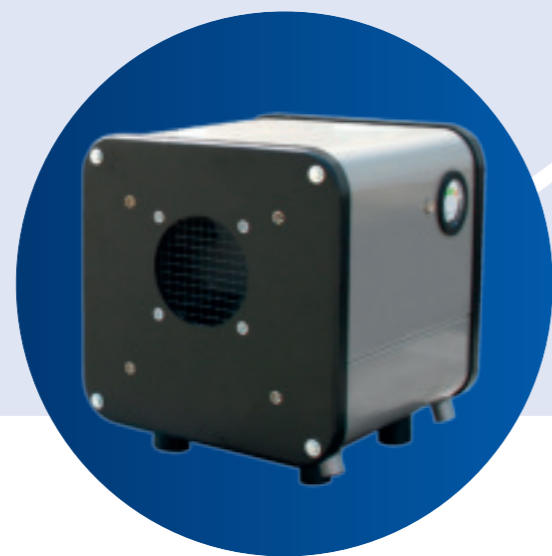
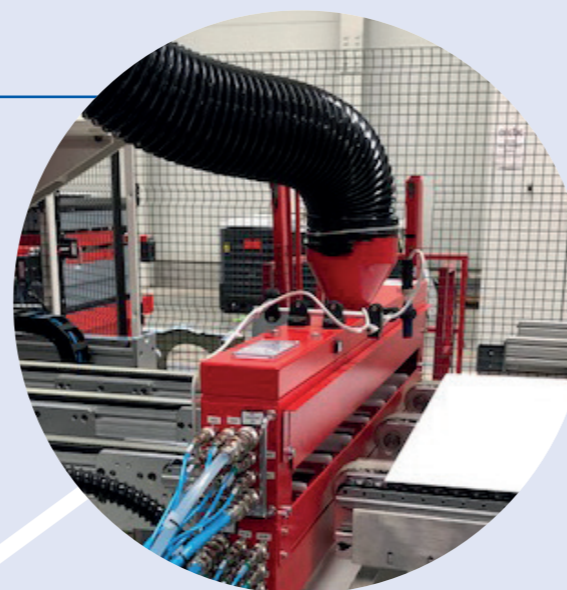
## STOP OIL SYSTEM 1200

### Filtering group for industrial extraction systems.

Multi-stage purifier for removing oily particles.

#### Applications:

In combination with "SEKTOR" lubrication systems, or on existing systems.



#### LMI srl

Via Cantarana, 2  
43058 Sorbolo Mezzani (PR) Italy  
Tel. +39 0521 318031  
Fax +39 0521 318049  
email: info@lmi-srl.it - www.lmi-srl.it  
VAT and Tax Code No. 13199020150

inkout



TECHNOLOGY  
DIVISION



ENVIRONMENTALLY-FRIENDLY  
LUBRICANTS FOR INDUSTRY

We are specialized in lubricants for metal stamping.

## CUSTOMER BENEFITS:

Applicable in small spaces

Precision lubrication

It reduces lubricant consumption

It increases mould life

Machine downtime reduction

Minimum maintenance

Simple to use

Reliable over time

## DESIGNED TO GUARANTEE:

- Clean working environment
- Reduction of lubricant consumption
- Improvement of cleaning and disposal activities

## CERTIFICATIONS

**LMI applies a strict quality system.**  
There is no reputation without quality and there is no quality without certified products and services.

COMPANY WITH CERTIFIED QUALITY MANAGEMENT SYSTEM **ISO 9001**



Advanced lubrication systems, designed to optimize space, consumption and processing cycles.

### SEKTOR 50

#### Sectoral lubrication systems for metal sheets.

- The application through a covered spray system allows a minimal lubrication without micro mist of the coil and blanks.
- The structure of the pneumatic system allows connections to be made, for a mirror matrix management.
- The activation and deactivation of the lubrication points in pairs takes place via the PLC of the customer's installation line. Or from the SIEMENS Touch Panel for the Sektor50PLC model. The latter allows to program and store different types of lubrication, each of which has specified the spraying time of each nozzle, being able to determine which areas of the sheet to lubricate and recall the specific program when necessary and adjusting the quantity of oil.

#### Applications:

Lubrication of blanks and coils.

**Optional:** heating element inside the tank. Useful when using lubricants with higher viscosity or subject to changes in chemical-physical properties based on temperature, or in Countries or plants with particularly low temperatures.

#### Type of lubrication:

- With selection
- Alternating
- Continuous one
- By points

#### Models:

- Sektor 50
- Sektor 50PLC Plus
- Sektor 50PLC Double
- Sektor 50PLC Plus Remoted

### SEKTOR ECO

#### Control unit of the series 2/6/12.

- Designed as a modular system to manage up to 12 lubrication lances.
- Spraying cycle defined by activation/deactivation of the control solenoid valve, each of which can control up to 2 nozzles (cone or fan).

To be operated from the control unit.

#### Applications:

Lubrication of blanks, coils and moulds or in processes that require spraying of the lubricant manually managed through the lances.

**Optional:** heating element inside the tank. Useful to keep the lubricant in the best possible conditions.

#### Type of lubrication:

- Continuous one
- Alternating
- By points

#### Models:

- Sektor Eco 2
- Sektor Eco 6
- Sektor Eco 12

### SYSTEM LYNE

#### Innovative solution that replaces the lubrication tanks and rollers.

- Possibility to change immediately the desired quantity of lubricant through a simple touch system, also as a function of the forward speed (SYSTEM LYNE ENCODER).

#### Applications:

Lubrication of blanks and coils.

#### Type of lubrication:

- Continuous one

#### Models:

- System Lyne
- System Lyne Double
- System Lyne Encoder

